



**THINAIR**

**Catalog Number:** *THINAIR (Stainless Steel)*  
**Product Type:** *Hand Dryer*

### **Applications:**

Used in public restrooms to enhance hygiene, eliminate waste and the associated costs of using paper towels. Save up to 90% of the cost of buying, stocking, maintaining and disposing of paper towels. Helps keep paper towels from causing septic problems. Tested to the Product Category Rules for Hand Dryers. Perfect for achieving ADA restroom requirements.

### **Description:**

The ThinAir hand dryer uses advanced hand drying technology to give you the one of the fastest drying times on the market. This dryer has been designed as a thin designed high speed hand dryer that satisfies ADA depth requirements as a surface mount unit. The ThinAir requires nothing more than a simple wall mount installation eliminating the older methods of recessing hand dryers into the wall to achieve ADA compliance. Constructed from brushed stainless steel, these units are ready for use 24/7, are virtually maintenance free and come with a 5 year manufacturer's warranty.

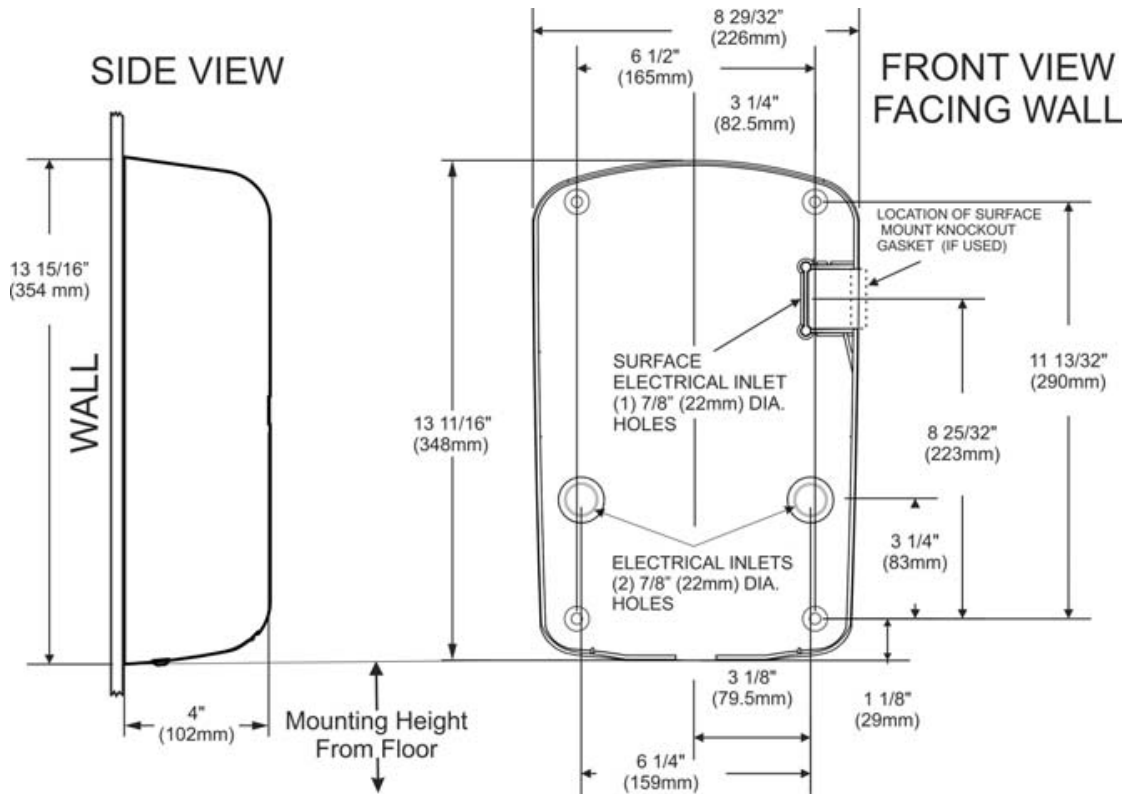
### **Specifications:**

- 15 second dry time (based on third party testing performed by SGS International on standard Thin Air hand dryer to 0.2g or less of residual moisture)
- Wattage: 960 Watts w/ heat; as low as 333 Watts (without heat)
- 5 year warranty from Excel Dryer; a top trusted manufacturer in the U.S.A.
- On/Off heat option
- Washable pre-filter
- Meets 4" ADA protrusion guidelines to accommodate the visually impaired
- Automatic sensor activated
- Surface mounted (wall mounted) and still ADA compliant
- 110-120 volt uses 8 amp, 208-240 uses 4 amp

**Open 8:30AM - 5PM Coast to Coast**  
**800-800-2811 [www.go-usg.com](http://www.go-usg.com)**

## PRE INSTALLATION WIRING

- Check that the electrical supply corresponds to that shown on the rating sticker of unit. If the dryer is connected to any electrical supply other than that stated on the rating sticker of the unit, permanent damage or improper, unsafe operation of the unit may result.
- Make sure electricity is switched off at the main panel before installing, maintaining or cleaning this hand dryer.
- Dryer must be installed in accordance with current local wiring and building regulations.
- Do not wire this hand dryer into the lighting circuit. It must be protected by an independent circuit.
- Dryer is intended to be permanently connected to power supply, and must be properly grounded.



## INSTALLATION INSTRUCTIONS

1. Disconnect the power source previously brought to the hand dryer location (see pre installation wiring above).
2. Use the Tamper-Proof Wrench supplied and remove the Tamper-Proof Bolt on bottom of cover lifting upwards to remove cover from base plate.
3. If electrical wiring entry is to be made from the rear, remove the appropriate pre-formed knockout on the base plate. If entry is to be made from the side, knock out the pre-formed area on the right side of cover for your supply connection using knockout gasket provided. A rigid conduit must be used.
4. Select the appropriate mounting height for dryer (Table 1) and fastener, as recommended (Table 2). There should be no obstruction between the hand dryer and the floor. If mounting over a countertop, distance from counter to dryer must be 15" (381 mm) minimum.
5. Identify the voltage of your dryer from the rating sticker of the unit. Then connect to a dedicated branch circuit not exceeding 20 Amp. per your local wiring and building regulations.
6. Secure electrical wiring to terminals as indicated by the schematic affixed to blower housing. An identified ground connection point is supplied on the Base Plate for your equipment ground wire. Dryers should be installed per local code requirements.
7. In multiple installations, make sure the serial number marked on the inside matches the cover number. Then carefully replace Cover by inserting top of cover over bracket and tilting downward. Use Tamper-Proof Bolt previously removed in step 2.
8. Restore power and test for proper operation.
9. Return Tamper-Proof Wrench to owner.

### TABLE 1

#### 1 SUGGESTED MOUNTING HEIGHT from floor to bottom of dryer:

Men	45" (114 cm)
Women	43" (109 cm)
Teenagers	41" (104 cm)
Small Children	35" (89 cm)
Handicapped	37" (94 cm)

### TABLE 2

#### 2 MOUNTING HARDWARE Recommended Fastener (not supplied):

Masonry Wall	½" Expansion Sleeve with ¼" Lag Bolt
Hollow Wall	¼" Wing Type Toggle Bolt
Wooden Wall	¼" Lag Screw With Washer

**CAUTION:** Do not use Base Plate as a guide when drilling. Make sure no pipe work (gas, water, air) or any electrical cables or wires are located directly behind the area to be drilled.